

**Boiling water instantly
at your fingertips**

ZIP Hydroboil®



澳洲捷寶牌飲水機

祇須手指一按，沸點滾水源源供應。

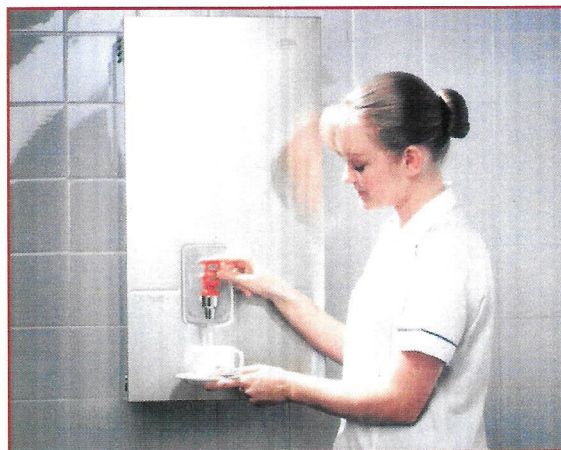
獨具冷熱水分開雙水箱，祇供滾水循環

蒸氣增速加熱，節省能源兼省時。

- Boiling water instantly for tea, coffee, cooking
- Designed to operate within 1°C of boiling point
- No more time wasted in waiting for water to boil
- No more energy wasted by boiling kettles or urns

SPECIFICATION

- Type : twin chamber instant boiling water heater
- Capacity : 1.5, 3.0, 5.0, 7.5, 15, 25, 40 litres
- Loading : 1.5 kW (1.5 and 3.0 litre)
2.4 kW (5.0 to 15 litre)
3.6 kW (25 litre)
6.0 kW (40.0 litre)
- Heating element; long life incoloy sheathed embedded rod type
- Thermostat; capillary type
- Boiling chamber : crevice-free stainless steel chamber with removable stainless steel access ports top and bottom
- Case: corrosion resistant white enamelled steel or stainless steel
- Insulation: compressed high temperature insulation panels engineered for quick access to boiling chamber ports
- Safety features : In addition to a thermal cutout integral to heating element, an extra thermal cutout is also included to prevent accidental damage in the event of pipe blockage, negative or positive pressure build up or thermostat failure.
- Hong Kong Water Authority Approved

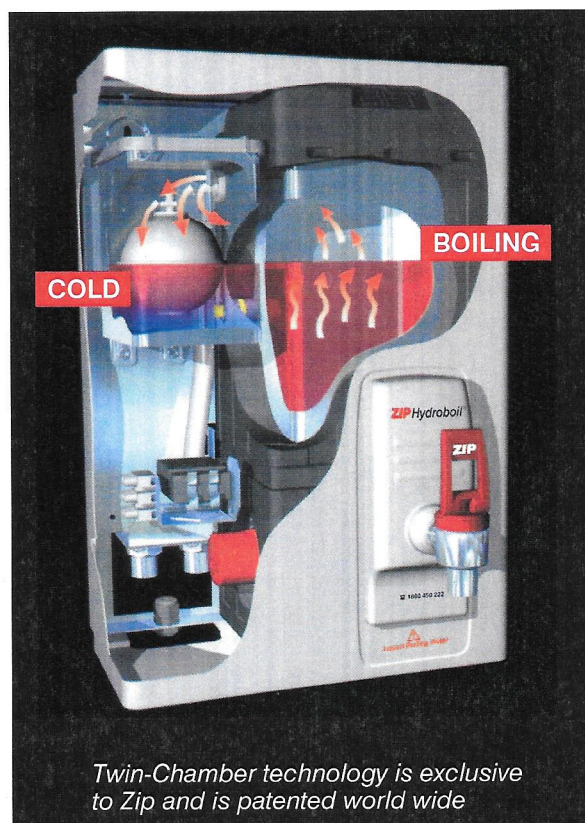


Health care-conscious hospitals & medical care centers are replacing energy wasting urns with super Zip Hydroboils
健康護理至善的醫院和護理中心都選用
ZIP高效能飲水機替換耗能高的水壺

ZIP HYDROBOIL features

TWIN CHAMBER™ TECHNOLOGY FOR REAL ENERGY SAVINGS

- Exclusive Twin-Chamber temperature control system is designed to maintain boiling water temperature within 1°C of boiling point
- The Twin-Chamber system separates boiling water from incoming cold water
- The Twin-Chamber Steam-Heat-Boost system recycles steam to pre-heat incoming cold water, improving thermal efficiency and reducing running costs
- Patented non-stick metering tube controls the flow of water into the boiling chamber at a rate which allows the temperature to be maintained within 1°C of boiling point.



Twin-Chamber technology is exclusive to Zip and is patented world wide

HIGH-PERFORMANCE FEATURES FOR ADDED SAFETY AND VALUE

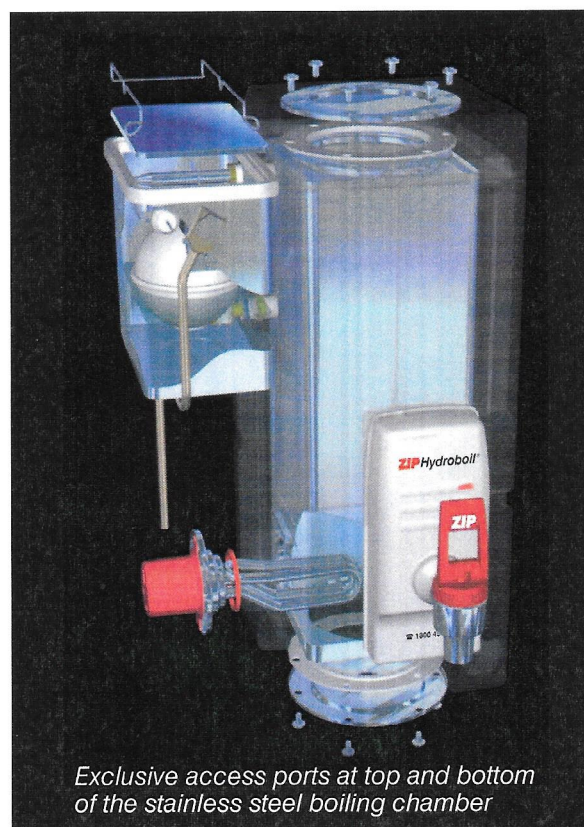
- Two-way safety tap gives precise fingertip control for filling cups, and reverses to "lock on" for hands-free filling of teapots and saucepans
- Long-life stainless steel boiling chamber with access ports top and bottom to allow removal of any accumulated sediment or mineral scale
- Long-life high-temperature insulation panels engineered for quick access to boiling chamber access ports
- Double-action thermal protection system with a thermal safety cutout built into the heating element plus a thermal safety cutout on the vent tube
- Comprehensive one-year warranty



Two-way safety tap gives precise fingertip control for filling cups



Tap locks ON for hands-free filling of large pots



Exclusive access ports at top and bottom of the stainless steel boiling chamber

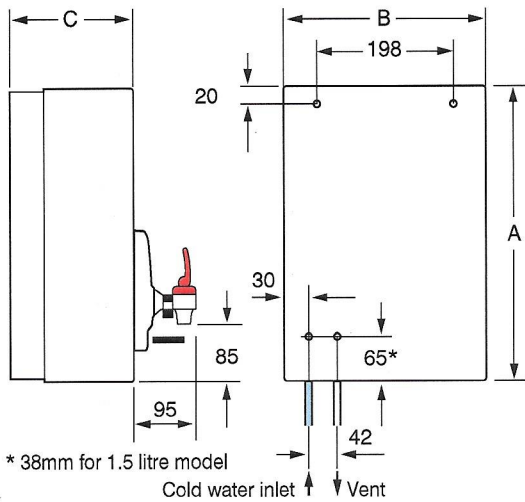
ZIP HYDROBOIL Specifications

CHOOSE FROM 7 MODELS

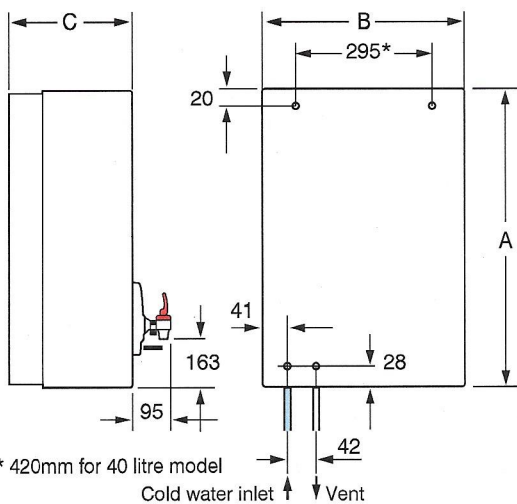
To choose the right size, simply estimate the number of cups required at any one time, then select the appropriate capacity from the selection chart below.

Model		Capacity (Litres)	Cups@ one time	Recovery Cups/Hour	Rating (kW)	Dimensions		
White Enamel	Stainless Steel					A	B	C
HS001	HS101	1.5	9	100	1.5	335	289	180
HS003	HS103	3.0	18	100	1.5	431	289	180
HS005	HS105	5.0	30	140	2.4	465	318	198
HS007	HS107	7.5	45	140	2.4	578	318	198
HS015	HS115	15.0	90	140	2.4	600	390	299
HS025	HS125	25.0	150	210	3.6	780	390	299
HS040	HS140	40.0	240	360	2x3.0	840	515	299

1.5, 3, 5 & 7.5 LITRE MODELS (mm)

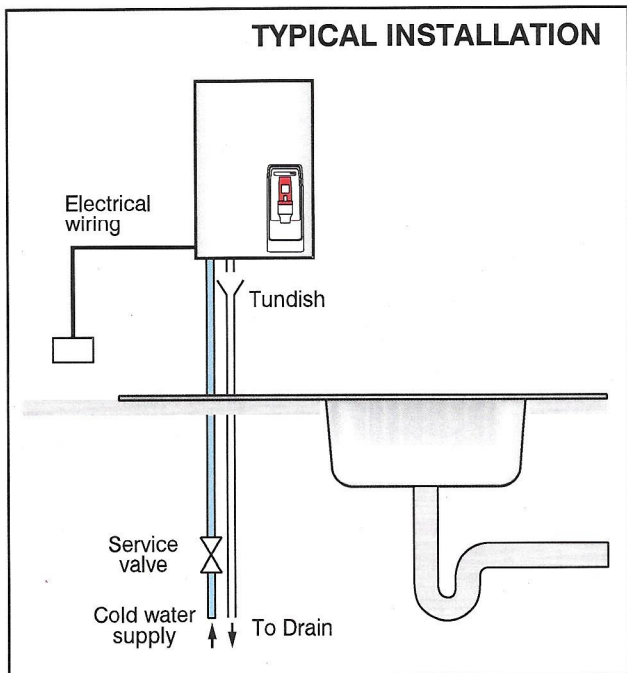


15, 25 & 40 LITRE MODELS (mm)

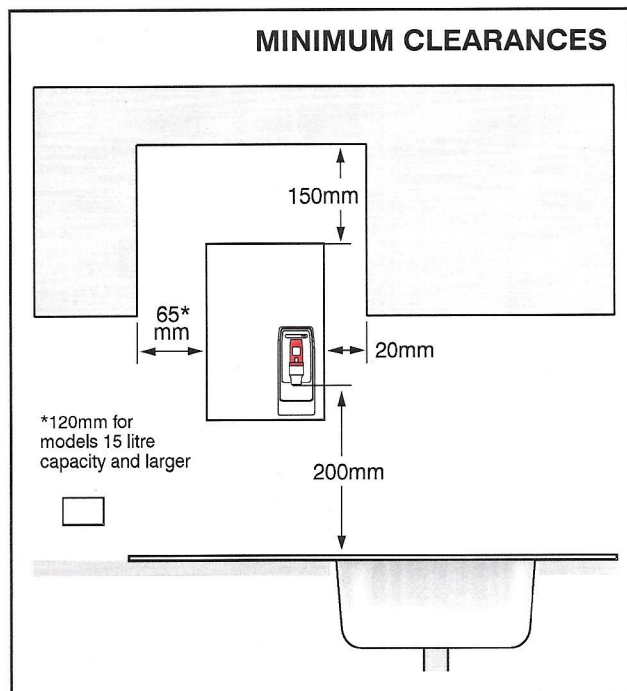


ZIP HYDROBOIL INSTALLATION

TYPICAL INSTALLATION



MINIMUM CLEARANCES



富德工程及貿易有限公司

FULLTECH ENGINEERING & TRADING LTD.

TEL: 35904101

Website: fulltech.com.hk

INSTALLATION REQUIREMENTS

Location

- Should be installed over a draining board, or over a work top fitted with a drip tray - tap spout should be no higher than necessary to fill large pots
- Minimum tap height above draining board is 200 mm
- Leave 150 mm above, 65 mm left and 20 mm right (120mm left on models 15 litre capacity and larger)
- Hanging and fixing screws supplied with wall plugs

Plumbing

- Designed for direct connection to a cold water supply with a minimum pressure of 15 psi and a maximum pressure of 100 psi (Min. 1 bar Max. 7 bar)
- A pressure reducing valve must be installed if water supply pressure is likely to exceed 100 psi
- An isolating valve should be installed between the water supply and the heater
- For concealed plumbing connections, connect inlet and vent pipes from the rear via 15 mm capillary elbows
- For exposed plumbing connections, connect inlet and vent pipes from the bottom directly to 15 mm compression fittings with nuts and olives provided

Venting

- The vent must discharge to a safe visible position as, under certain conditions, the vent may discharge cold or boiling water and/or steam
- The vent pipe outlet must be connected to a 15 mm OD copper vent pipe which has a continuous fall, is no more than 3 metres long, and has no more than 3 right angle bends

Electrical

- To be wired to a double pole fused switch, minimum break rating of 13 amps (20 amps for 25 litre model and 30 amps for 40 litre model) with effective earthing.
- For concealed electrical connection, connect a fixed or flexible cable from the rear directly to the terminal block
- Installation must comply with current IEE regulations

Caution

- In some hard water areas where mineral scale accumulation can become a problem, consideration should be given to the maintenance required. A suitable form of water treatment may be necessary. Must be installed by EMSD registered worker and in accordance with local water plumbing regulations and local electricity regulations.

Additional Installation Instruction For Hong Kong Area

- Socket or switch must be properly installed in accordance to EMSD regulations. A Leakage Fuse Protection within the house fuse circuit required.
- Incoming water from mains or roof water tank may contain sediment or minerals scale, clients may consider installation of filter system with stop valve to get best water quality for this drinking machine.
- To ensure the water quality avoiding contamination of the water storage tank, this unit should only be installed after all pipe works are completed and thoroughly flushed.